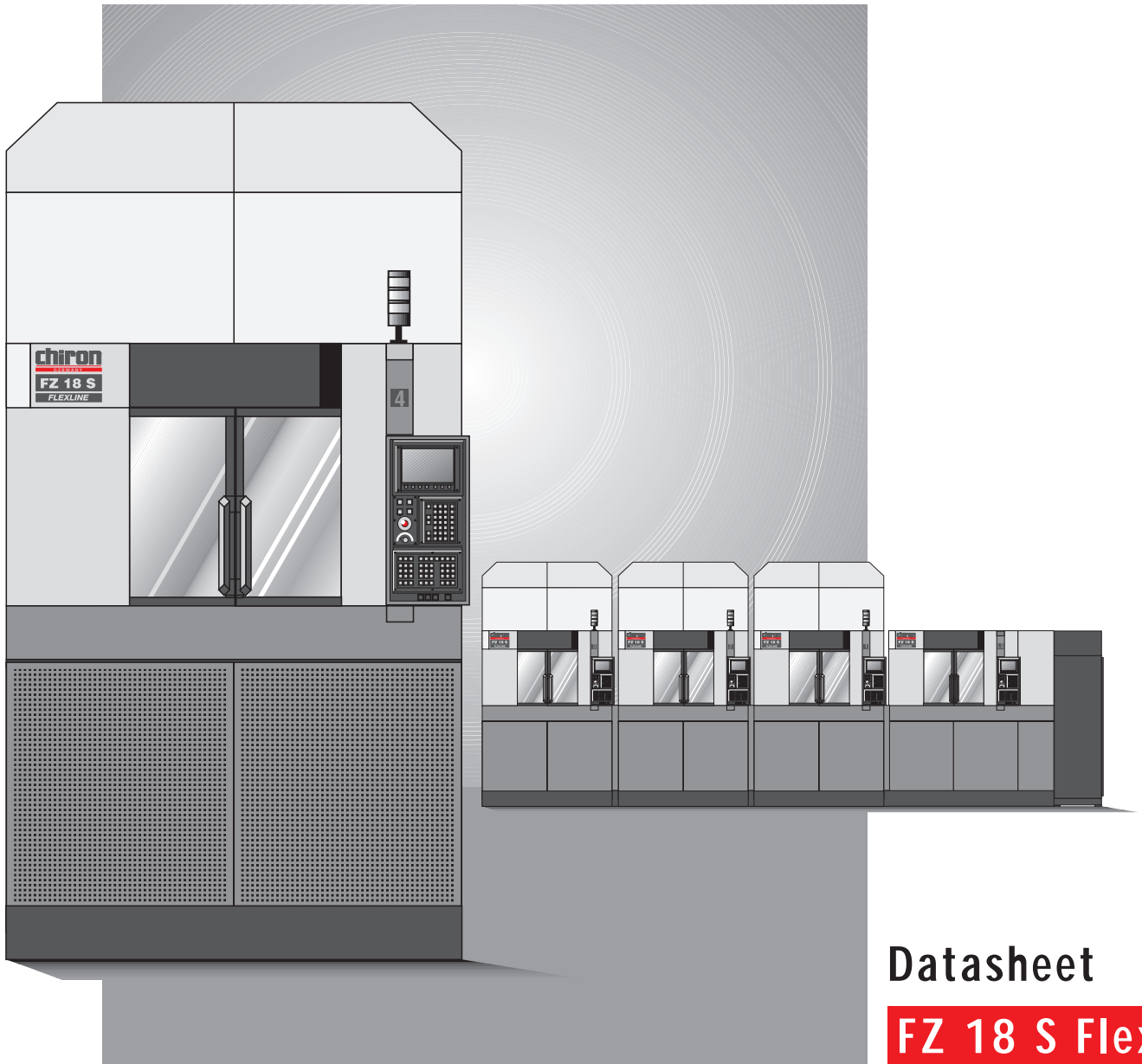


chiron

CNC Machining Centres



Datasheet

FZ 18 S Flexline

HSK-A 63

Tools 20

Tool change 0.9 s

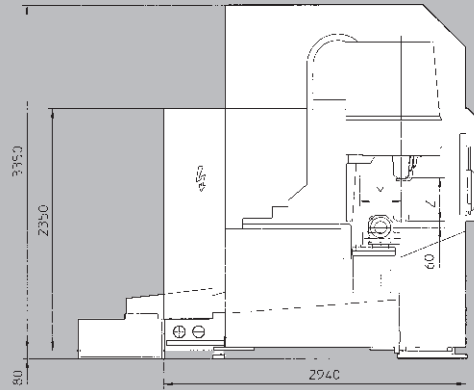
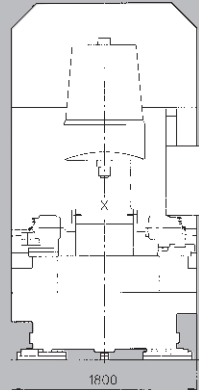
Chip-to-chip 2.4 s

Spindle speed up to 15 000 rpm

Rapid traverse rate 40 m/min

Seconds ahead

FZ 18 S Flexline

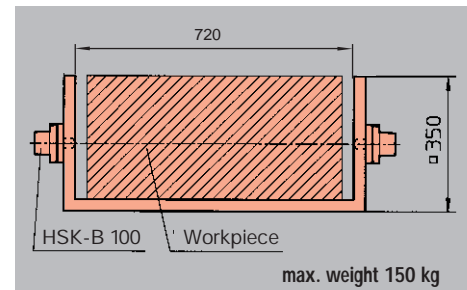


Technical data

Drilling capacity in steel ST 60, carbide drill	42 mm
Tapping capacity	M 30
Facemilling in ST 60	300 cm ³ / min
Tool storage capacity	20
Spindle taper DIN 69893	HSK-A 63
Max. tool diameter	65 mm
If adjacent pockets free	150 mm
Max. tool weight	5 (8) kg
Tool change time	approx. 0.9 s
Chip-to-chip time	approx. 2.4 s
Main spindle power, AC	18 kW
Spindle speed	20 - 10500 rpm
Max. torque	140 Nm
Front spindle bearing diameter	70 mm
Tool clamping system	mechanical
Spindle to covers (throat)	440 mm
Spindle nose to NC-rotary centre	60 - 485 mm
Travel X-axis	630 mm
Travel Y-axis	400 mm
Thrust X/Y-axes	5 000 N
Travel Z-axis	425 mm
Thrust Z-axis	10 000 N
Rapid traverse rate X-/Y-/Z-axes	40 m/min
Thermocontrol	
NC rotary table with automatic pallet	
Location system	HSK-B 100
Pallet clamping force	20 000 N
Chip conveyor with high pressure	
Coolant through spindle system	20 bar
Total enclosure	illuminated
Total connected power	approx. 21 kVA
Machine weight per station	4.5 t
Floor space per station	5.5 cm ²
Air pressure requirement	6 bar
Easy Lub	

Pallet

■ Pallet for trunnion fixture



Options

High power spindle AC	26 kW
Spindle speed	20 - 10500 rpm
Max. torque	300 Nm
Higher spindle speed	20 - 15000 rpm
Max. torque	90 Nm
Main spindle power AC	14 kW
Coolant through spindle	70 bar

■ Power monitoring for tool breakage and misloading ■ Drill breakage and tool life management ■ Direct distance measuring system ■ Probe, tool measurement and tool management ■ Chiron-laser-control ■ Tool-ID box ■ Mist collector