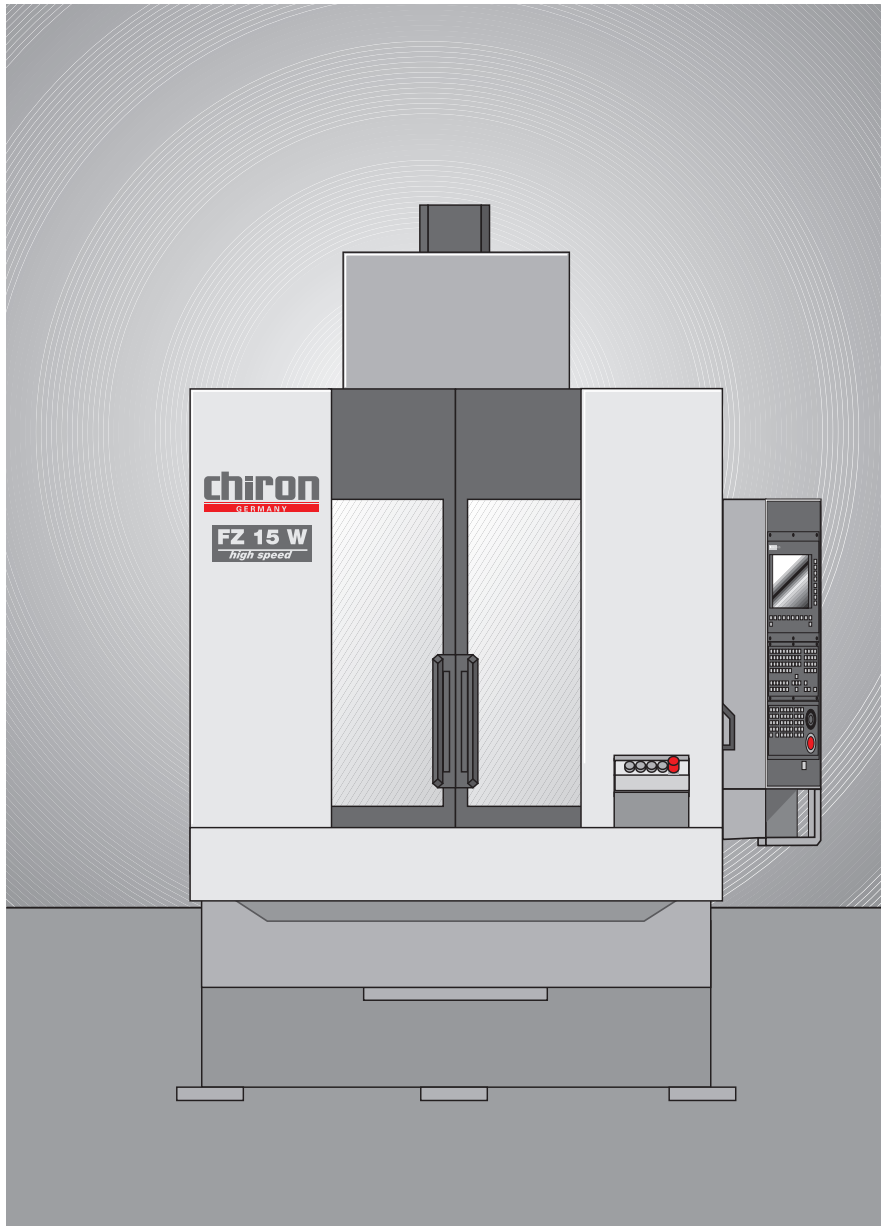


# chiron

## CNC Machining Centres



### Datasheet

## FZ 15 W

---

ISO 40

---

Tools 20

---

Chip-to-chip 1.9 s

---

Spindle speed up to 20 000 rpm

---

Rapid up to 60 m/min

---

Acceleration up to 1.0 g

---

## Seconds ahead

# CHIRON - WERKE GmbH & Co. KG

Talstr. 23 · D-78532 Tuttlingen

Telephone (0 74 61) 9 40-0

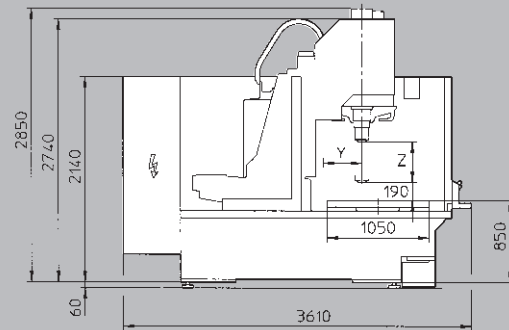
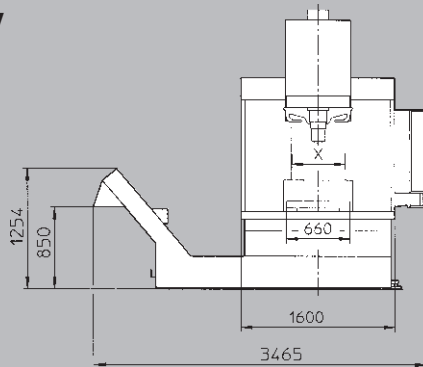
Telefax (0 74 61) 31 59

info@chiron-werke.de

www.chiron-werke.de

# chiron

## FZ 15 W



### Technical data

Drilling capacity in ST 60 with HM drill	36 mm
Tapping	M 24
Milling capacity in ST 60	250 cm <sup>3</sup> /min
Tool storage capacity	20
Tool taper ISO 69871	ISO 40
Max. tool diameter	65 mm
If adjacent places are free	150 mm
Max. tool weight	2.5 (5) kg
Tool change time	approx. 0.9 s
Chip-to-chip time	approx. 1.9 s
Spindle drive	14 KW
Infinitely variable speed range	20 - 10 500 rpm
Max. torque	90 Nm
Diameter front spindle bearing	70 mm
Tool clamping	8 000 N
Distance spindle to column	435 mm
Distance spindle nose to table surface	190 - 615 mm
Travel X-axis	550 mm
Travel Y-axis	400 mm
Feed force X-axis, Y-axis	5 000 N
Travel Z-axis	425 mm
Feed force Z-axis	10 000 N
Rapid feed rate	40 m/min
Acceleration	0.5 g
Workpiece change setup with speed control	0°/180°
Mounting surface	2 x 660 x 400 mm <sup>2</sup>
Dowel and bolt hole pattern	M 16 x ø 15 <sup>H7</sup> x 50 mm
Workpiece changing time	approx. 2.4 s
Max. transport load per side	100 (200) kg
Chip conveyor, discharge height	850 mm
Coolant device, container capacity	500 l
Total connected power	approx. 19 kVA
Machine weight	approx. 5.0 t
Floor space	approx. 5.8 m <sup>2</sup>
Air connection	6 bar

### Options

<b>High speed version</b>	
Basic machine with acceleration	1 g
Rapid feed rate	60 m/min
Speed range	20 - 12 000 rpm
<b>High speed plus version</b>	
Basic machine with acceleration	1 g
Rapid feed rate	60 m/min
Speed range	20 - 20 000 rpm
Tool taper DIN 69 893	HSK-A 63
Max. tool dia. if adjacent places are free	100 mm
Full enclosure	
Total connected power	approx. 30 KVA
Machine weight	approx. 6.5 t
<b>Higher spindle drive</b>	
Speed range	20 - 12 000 rpm
Max. torque	180 Nm
Drilling capacity in ST 60 with carbide drill	42 mm
Tapping	M 30
Milling capacity in ST 60	500 cm <sup>3</sup> /min

■ NC rotary table ■ Through the spindle coolant up to 70 bar ■ Full enclosure with extraction ■ Automatic doors ■ Dry machining with minimal lubrication ■ Thermo-control ■ Probes for workpiece and tool measurement ■ Tool breakage monitoring and tool life management ■ Direct path measuring system ■ Chiron-laser-control ■ Multi-spindle head adaptor ■ Tool taper HSK-A 63 ■ Workpiece transport and magazine equipment ■ Stationary 3-D probe system

■ 2 s workpiece changer with integrated NC-rotary table

