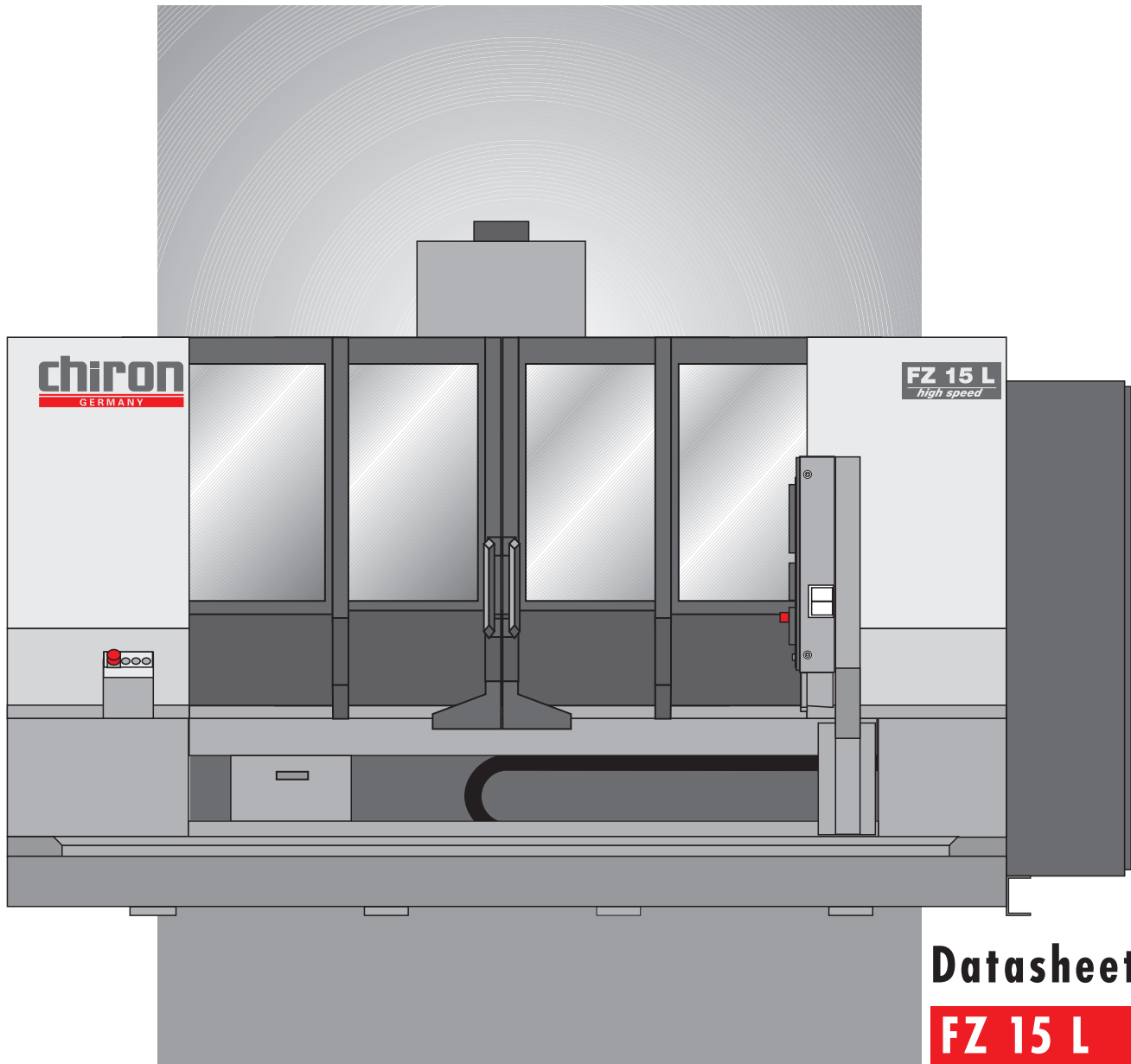


chiron

CNC Machining Centres



Datasheet

FZ 15 L

ISO 40

Tools 20

Chip-to-chip 1.9 s

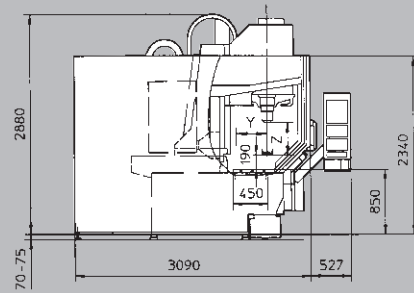
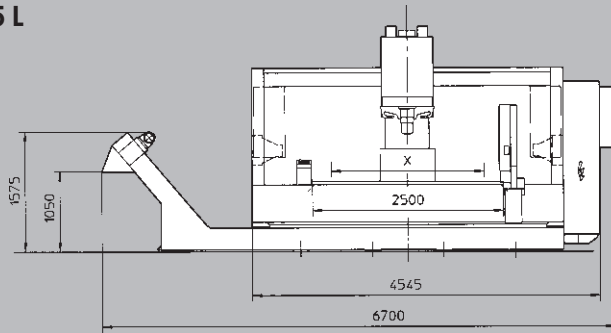
Spindle speed up to 20 000 rpm

Rapid up to 60 m/min

Acceleration up to 1.0 g

**Seconds
ahead**

FZ 15 L



Technical data

Drilling capacity in ST 60 with HM drill	42 mm
Tapping	M 30
Milling capacity in ST 60	500 cm ³ /min
Tool storage capacity	20
Tool taper DIN 69871	ISO 40
Max. tool diameter	65 mm
If adjacent places are free	150 mm
Max. tool weight	2.5 (5) kg
Tool change time	approx. 0.9 s
Chip-to-chip time	approx. 2.4 s
Spindle drive	28 KW
Infinitely variable speed range	20 - 10 500 rpm
Max. torque	180 Nm
Diameter front spindle bearing	70 mm
Tool clamping	8 000 N
Distance spindle to column	435 mm
Distance spindle nose to table surface	190 - 615 mm
Travel X-axis	1 250 /2 000 /2 600 mm
Fixed table length	1 850 /2 600 /3 200 mm
Max. shuttle operation	-- /2 x 750 /2 x 1 050 mm
Travel Y-axis	400 mm
Fixed table width	450 mm
Feed force X-axis, Y-axis	5 000 N
Travel Z-axis	360 mm
Feed force Z-axis	10 000 N
Rapid feed rate	40 m/min
Acceleration	0.5 g
Fixed table clamping surface	1 050 x 450 mm ²
T-Slots	2 x 18 H 12
Reference slot	18 H 8
Chip conveyor, discharge height	1 050 mm
Coolant device, container capacity	600 l
Total connected power	approx. 20 kVA
Machine weight	6.0/7.0/8.0 t
Floor space	9.5/14/17.5 m ²
Air connection	6 bar

Options

High speed version

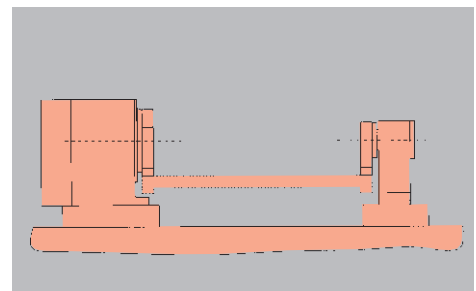
Basic machine with acceleration	1 g
Rapid feed rate	60 m/min
Speed range	20 - 12 000 rpm

High speed plus version

Basic machine with acceleration	1 g
Rapid feed rate	60 m/min
Speed range	20 - 20 000 rpm
Tool taper DIN 69893	HSK-A 63
Max. tool dia. if adjacent places are free	100 mm
Full enclosure	
Total connected power	approx. 30 kVA

- NC rotary table ■ Through the spindle coolant up to 70 bar ■ Full enclosure with extraction ■ Automatic doors ■ Dry machining with minimal lubrication
- Thermocontrol ■ Tool breakage monitoring and tool life management ■ Direct path measuring system ■ Chiron-laser-control ■ Multi-spindle head adaptor
- Tool taper HSK-A 63 ■ Workpiece transport and magazine equipment
- Stationary 3-D probe system

- NC rotary table with standard basic fixture and free fall of chips



- Probe

