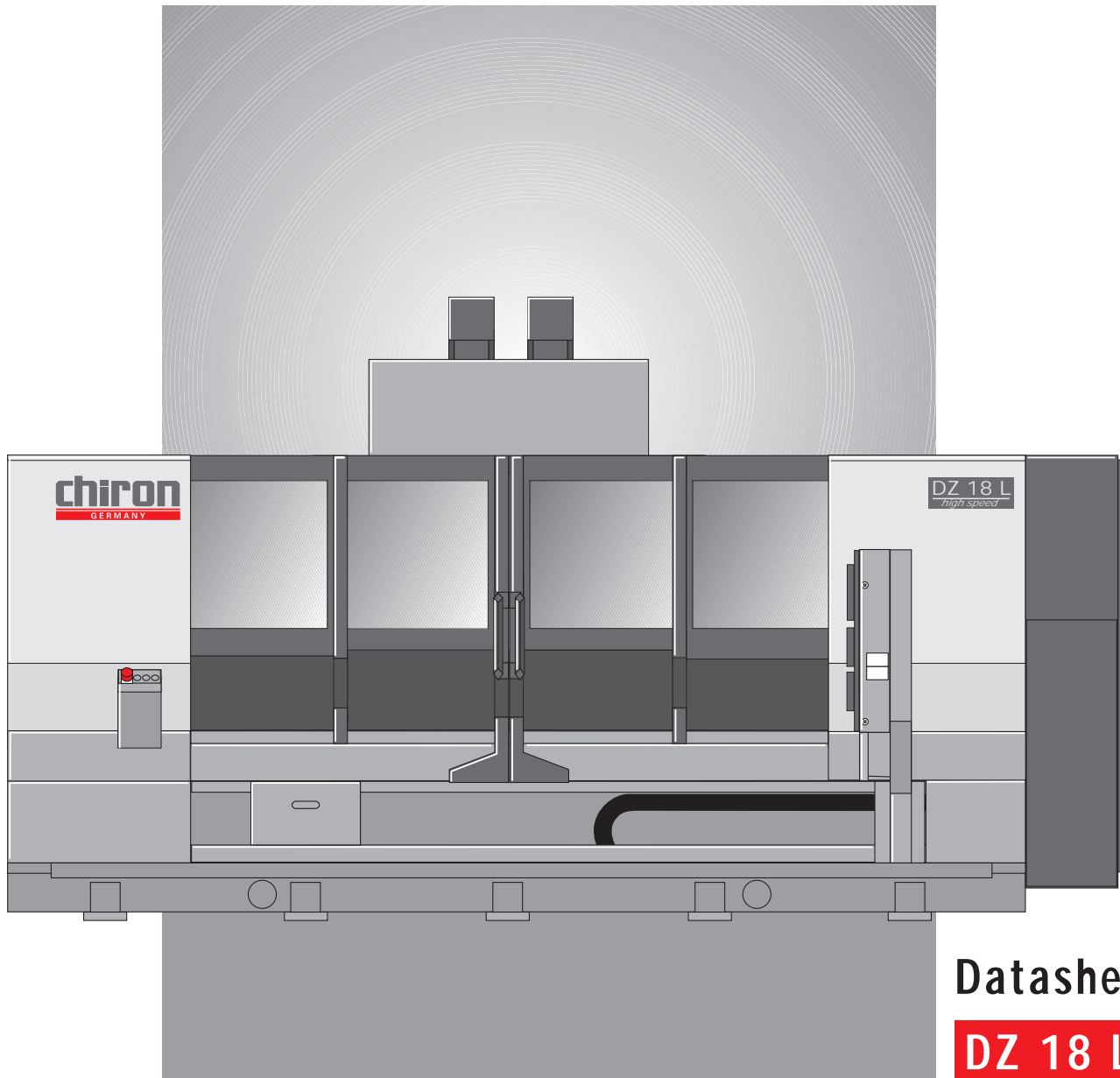


chiron

CNC Machining Centres



Datasheet

DZ 18 L

ISO 40

Tools 2 x 36

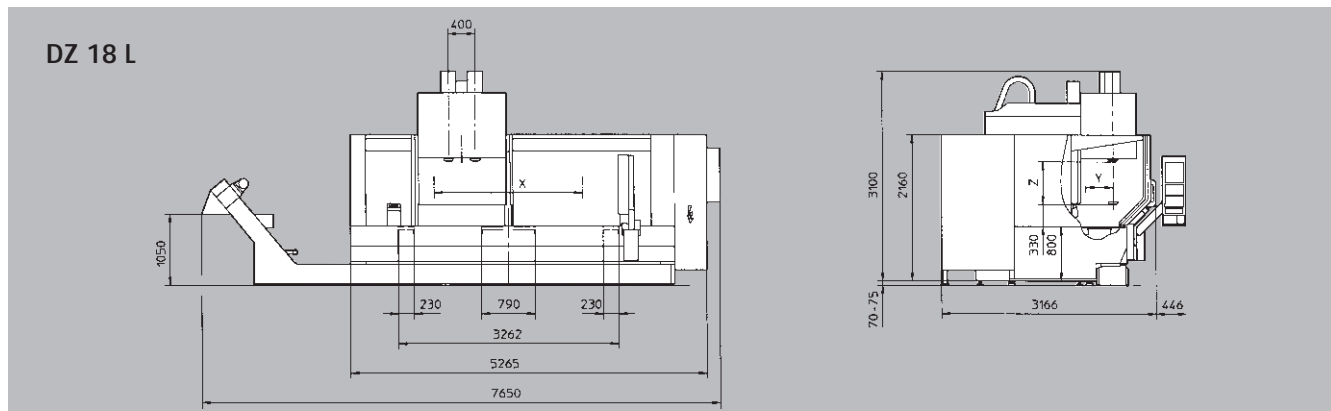
Tool change 1,0 s

Chip-to-chip 2.9 s

Spindle speed up to 20 000 rpm

Rapid 40 m/min

Seconds ahead

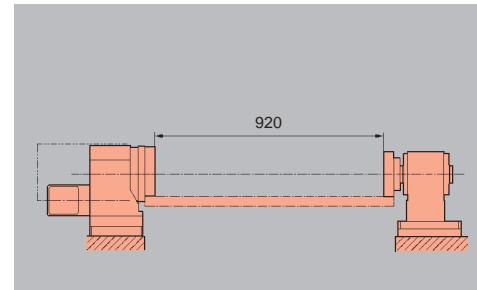


Technical data

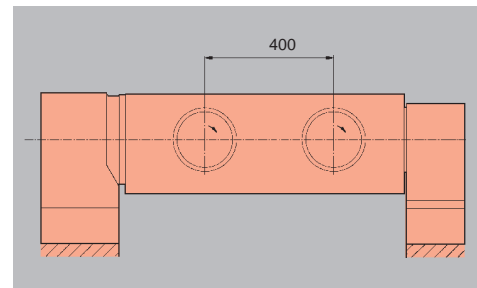
Drilling capacity in ST 60 with carbide drill	2 x 42 mm
Tapping	2 x M 30
Milling capacity in ST 60	2 x 200 cm ³ /min
Tool storage capacity	2 x 36
Tool taper ISO 7388	ISO 40
Max. tool diameter	78 mm
If adjacent places are free	160 mm
Max. tool weight	5 (8 kg)
Max. tool length	280 mm
Tool change time	approx. 1.0 s
Chip-to-chip time	approx. 2.9 s
Spindle drive AC	2 x 18 kW
Infinitely variable speed range	20 - 10 500 rpm
Max. torque	2 x 140 Nm
Diameter front spindle bearing	70 mm
Tool clamping	8 000 N
Distance spindle to column	435 mm
Distance spindle nose to table surface	330 - 960 mm
Spindle distance in X	400 mm
Travel X-axis	2 200 mm
Shuttle operation X-axis	4 x 400 mm
Travel Y-axis	400 mm
Feed force X-axis, Y-axis	8 000 N
Travel Z-axis	630 mm
Feed force Z-axis	12 000 N
Rapid feed rate	40 m / min
3 spacers for incorporating NC rotary units with counter bearing	
Chip conveyor, discharge height	1 050 mm
Coolant device, container capacity	470 l
Full enclosure	illuminated
Total connected power	approx. 30 kVA
Machine weight	approx. 7.5 t
Floor space	approx. 16.5 m ²
Air connection	6.0 bar

Options

■ NC rotary table with standard basic fixture and free fall of chips



■ Twin spindle index table



Increased speed range	20-12 000 rpm
Max. torque	2 x 140 Nm
Spindel drive AC	2 x 18 kW
Increased speed range	20-20 000 rpm
Max. torque	2 x 90 Nm
Spindel drive AC	2 x 14 kW
Tool taper DIN 69893	HSK-A63
Higher spindle drive AC	26 kW
Speed range	20 - 10 500 rpm
Max. torque	300 Nm

- Full enclosure with extraction
- Automatic doors
- Through the spindle coolant up to 70 bar
- Tool measurement and tool management
- Thermocontrol
- Drill fracture control and tool life management
- Tool taper HSK-A 63
- With fixed table
- Dry machining with minimal lubrication
- Chiron-laser-control