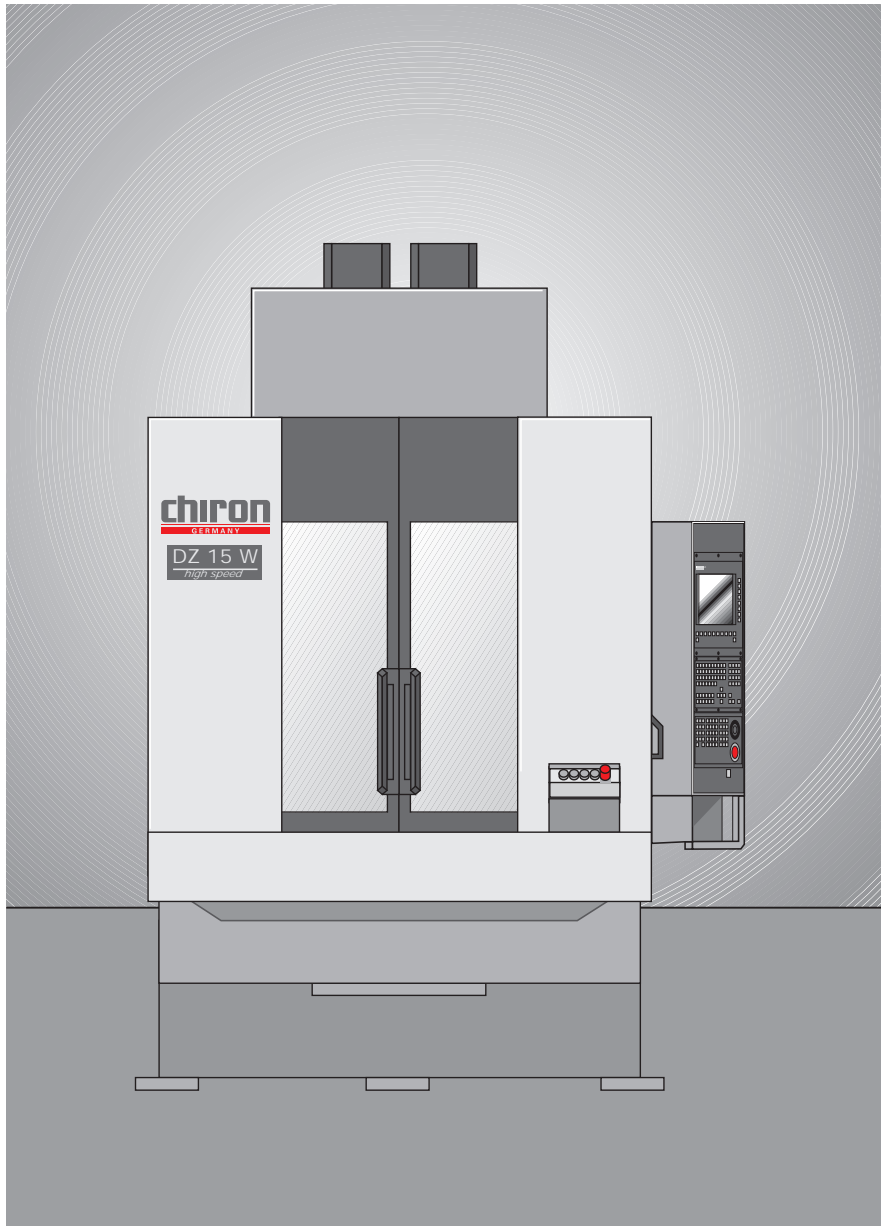


# chiron

## CNC Machining Centres



### Datasheet

## DZ 15 W

---

ISO 40

---

Tools 2 x 12

---

Chip-to-chip 1.9 s

---

Spindle speed 12 000 rpm

---

Rapid up to 60 m/min

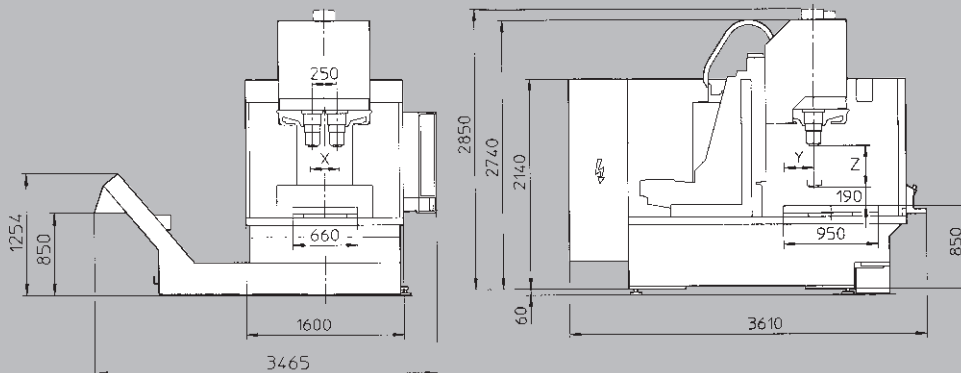
---

Acceleration up to 1.0 g

---

## Seconds ahead

**DZ 15 W**



**Technical data**

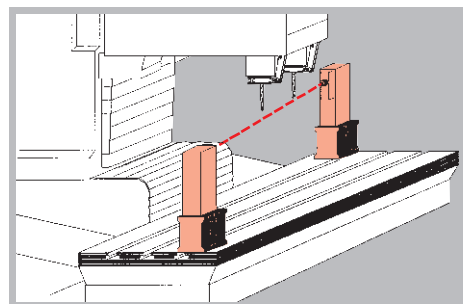
Drilling capacity in ST 60 with HM drill	2 x 36 mm
Tapping	2 x M 24
Milling capacity in ST 60	2 x 250 cm <sup>3</sup> /min
Tool storage capacity	2 x 12
Tool taper DIN 69871	ISO 40
Max. tool diameter	65 mm
If adjacent places are free	150 mm
Max. tool weight	2.5 (5) kg
Tool change time	approx. 0.9 s
Chip-to-chip time	approx. 1.9 s
Spindle drive	2 x 14 kW
Infinitely variable speed range	20 - 10 500 rpm
Max. torque	2 x 90 Nm
Diameter front spindle bearing	70 mm
Tool clamping	8 000 N
Distance spindle to column	435 mm
Distance spindle nose to table surface	190 - 615 mm
Spindle clearance in X	250 mm
Travel X-axis	300 mm
Travel Y-axis	400 mm
Feed force X-axis, Y-axis	5 000 N
Travel Z-axis	425 mm
Feed force Z-axis	10 000 N
Rapid feed rate	40 m/min
Acceleration	0.5 g
Workpiece change setup with speed control	0°/180°
Mounting surface	2 x 660 x 400 mm <sup>2</sup>
Dowel and bolt hole pattern	M 16 x Ø 15 <sup>H7</sup> x 50 mm
Workpiece changing time	approx. 2.4 s
Max. transport load per side	400 kg
Chip conveyor, discharge height	850 mm
Coolant device, container capacity	500 l
Total connected power	approx. 20 kVA
Machine weight	approx. 5.5 t
Floor space	approx. 5.8 m <sup>2</sup>
Air connection	6 bar

**Options**

<b>High speed version</b>	
Basic machine with acceleration	1 g
Rapid feed rate	60 m/min
Speed range	20 - 12 000 rpm
<b>Higher spindle drive</b>	
Speed range	20 - 12 000 rpm
Max. torque	2 x 180 Nm
Drilling capacity in ST 60 with carbide drill	2 x 42 mm
Tapping	2 x M 30
Milling capacity in ST 60	2 x 200 cm <sup>3</sup> /min

- NC rotary table
- Through the spindle coolant up to 70 bar
- Full enclosure with extraction
- Automatic doors
- Dry machining with minimal lubrication
- Thermo-control
- Probes for workpiece and tool measurement
- Tool breakage monitoring and tool life management
- Direct path measuring system
- Multi-spindle head adaptor
- Tool taper HSK-A 63
- Workpiece transport and magazine equipment
- Stationary 3-D probe system

- Chiron-laser-control system for tool fracture control, tool measurement and temperature compensation



- NC rotary table with basic fixture

